

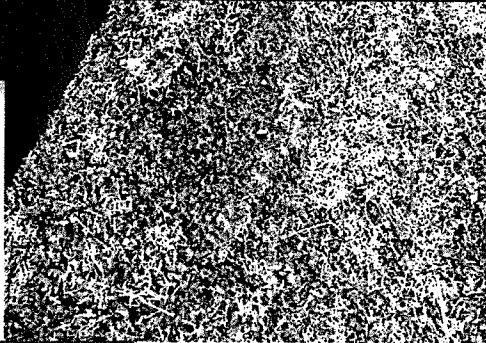
CURBSIDE AND TOWN DROPOFF RECYCLING OF SHREDDED PAPER HAS COME TO AN END.

FYI

It's sad, but true...

We can no longer collect shredded paper curbside or from town dropoffs (even if bagged or boxed).

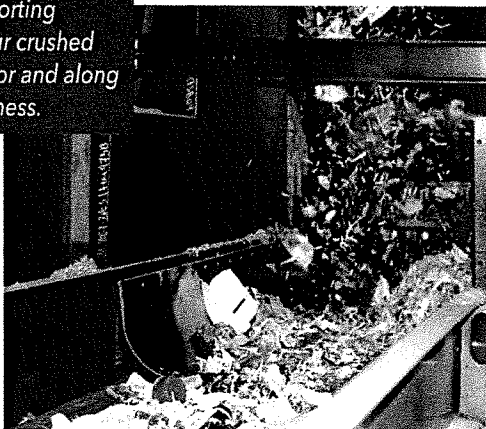
Shredded and other small bits of paper are too small for our recycling system to correctly sort.



The shredded paper falls through the slots on sorting screens and ends up as a big contaminant in our crushed glass or ends up going out on the trash conveyor and along the way, it can jam up equipment and make a mess.

Boxing it or putting it in plastic bags is not working and causing other problems.

By weight, shredded paper is only a very small portion of what we collect and has little impact on recycling rates. By keeping it out of recycling, it will greatly improve the quality of the thousands of tons of glass we recycle each year.



WHAT CAN YOU DO WITH SHREDDED PAPER?



- You can put shredded paper into your household trash.
- You can bring bagged shredded paper at County Paper Shredding events - visit burlicorecycles.com for event dates.
- You can bring shredded paper in CLEAR PLASTIC bags to the Purple "Shredded Paper" dumpster at the County Resource Recovery Complex in Mansfield Township. The purple dumpster is our only public dropoff for shredded paper.

STOP bringing shredded paper to your municipal dropoff!

Your cooperation will make our overall recycling program more successful and greatly improve the quality of the glass we recycle.

